

# 10 Technical Flaws to Watch For



1. Out of Focus
2. Empty Space
3. Distractions
4. Over Sharpening
5. Excessive Contrast
6. Weak Coloration
7. Over Saturation
8. Overuse of HDR
9. Over or Under Exposure
10. Image Not Level



# 1. Out of Focus



- Do out of focus areas of the image enhance the subject or the story?
- Sufficiently out of focus areas can create separation between the subject and the background.
- Out of focus areas in the main subject can be distracting and draw the eye from the main points of interest.
- Does the combination of in focus and out of focus areas make it an appealing image.

# 1. Out of Focus



PSRI



## 2. Empty Space



- Large areas of the image that have no content, such as a plain sky or wall.
- If the blank areas do not add to the impact of the image, they are likely unnecessary.

## 2. Empty Space

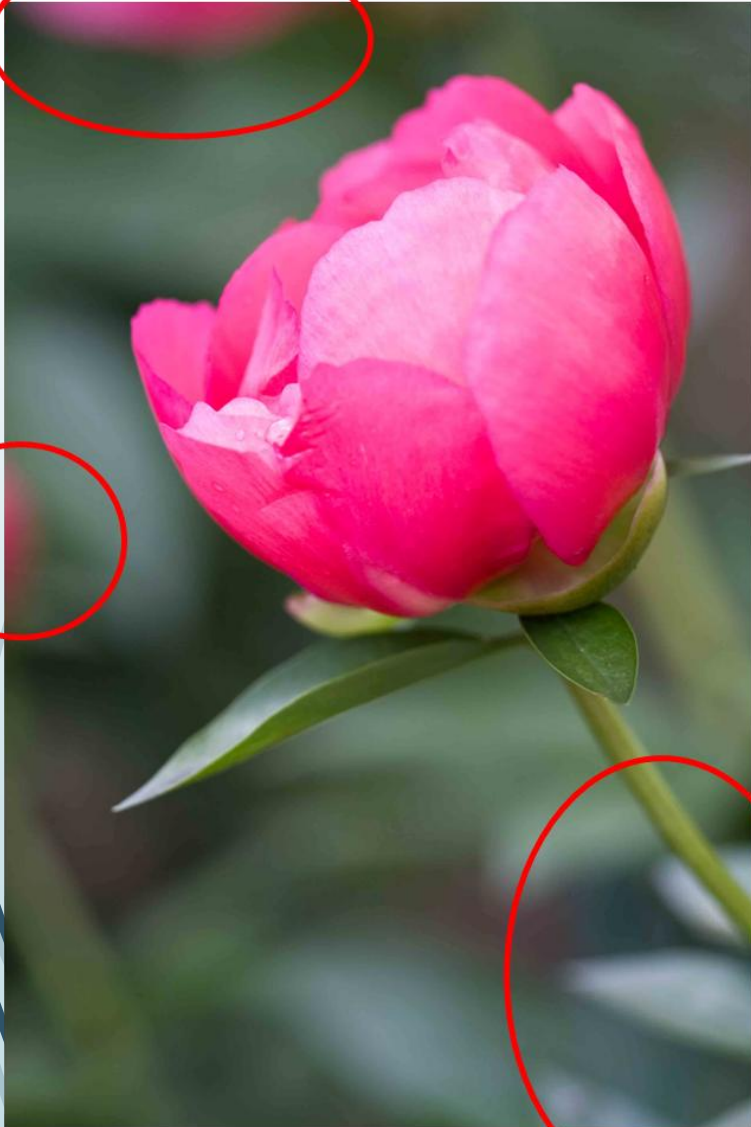


### 3. Distractions

- Anything that draws the viewer away from the subject of the image.
- These can be bright areas in the background, objects extending into the image from the edges, small parts of the subject extending out of the frame, a leading line that leads away from the subject, and the like.



### 3. Distractions



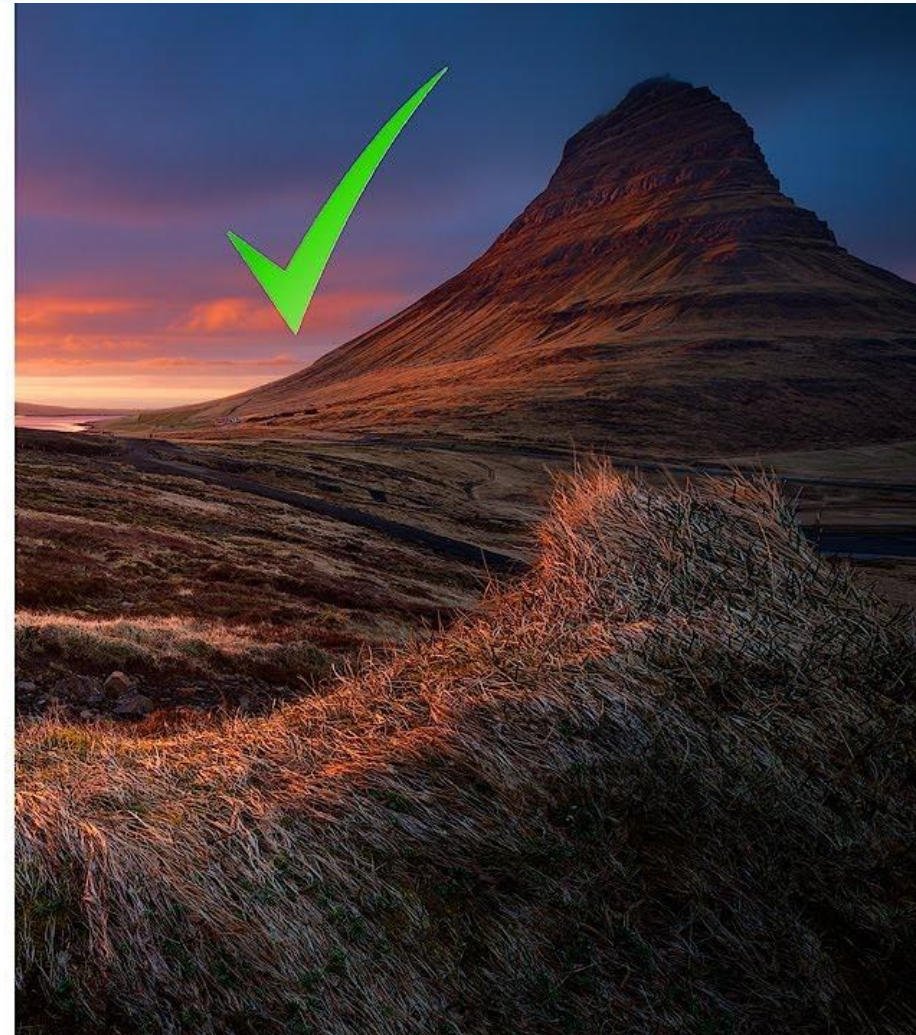
PSRI

## 4. Over Sharpening

- The over ambitious application of sharpening to an image can cause halos at the edges between dark and light areas of an images.
- Such as, between the sky and mountains and buildings



## 4. Over Sharpening



## 5. Excessive Contrast

- Unless an image is obviously abstract or includes an intended area of dark shadow, all significant areas of a photo should be lit adequately to show some texture or other detail.



## 5. Excessive Contrast



## 6. Weak Coloration

- The image appears flat.
- Faded color, or a gaping absence of tone where strong color saturation would normally be expected.
- Such as a substantial white or “bald” sky



## 6. Weak Coloration

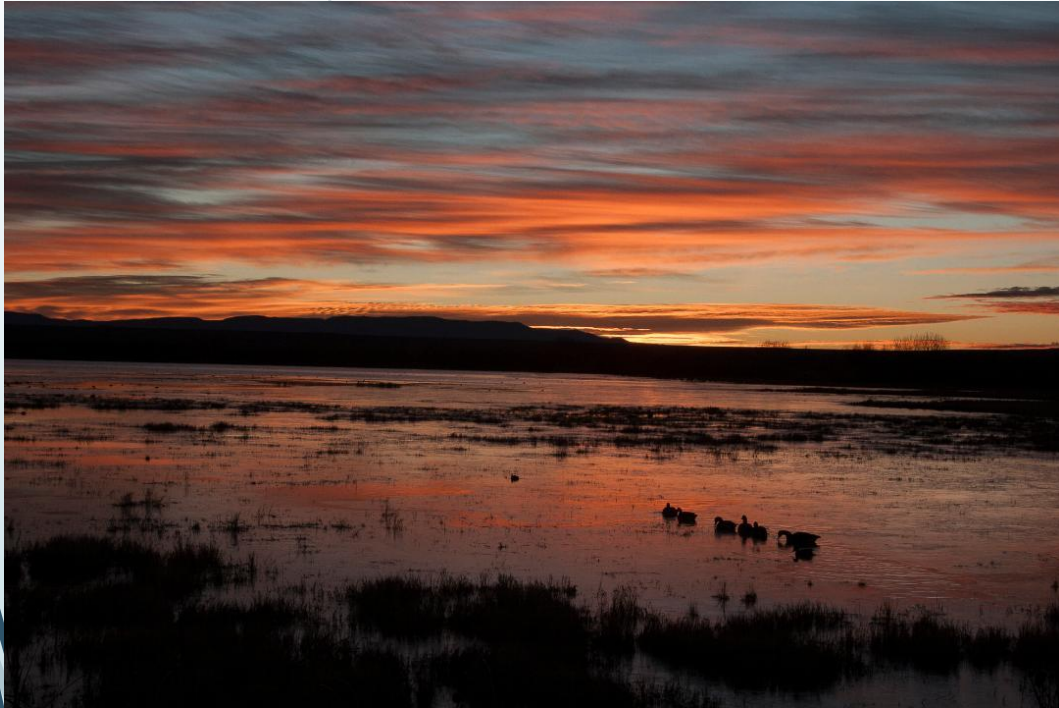


## 7. Over Saturation

- Colors appear too strong or exaggerated for effect.



## 7. Over Saturation



## 8. Over-Use of HDR

- Correctly executed HDR looks as if the image was properly lit, as if the scene could be viewed as natural.
- Unless the intent is the so called “Grunge” look, or other unnatural effect, excessive use of HDR results in odd looking segments that do not contribute to the overall success of an image.



## 8. Over-Use of HDR



## 9. Over-or Under-Exposure

- A relatively rare occurrence these days with automatic exposure control with digital imaging.



# 9. Over-or Under-Exposure



## 10. Image Not Level



- Tilted horizons are often the first thing a judge notices, and an easy thing for a maker level in cropping to correct.
- Curved horizons in very wide angle captures may also be a distraction unless it contributes to the image design

# 10. Image Not Level





PSRI