

PSRI – Rules for Digital Competition

Competition is open to PSRI Paid/Current Membership Only

The digital projected competitions comply with the general PSRI Competition Rules. There are currently five OPEN competition nights and two NATURE competition nights each year. Occasionally, there may be a competition with a specific theme; portrait and photojournalism are examples of specific themes. Read the rules carefully as the rules are very specific for NATURE competition images.

Competitions are judged by an experienced photographer from another club; we try to ensure that an individual does not judge more than one competition in a year.

Awards of First, Second and Third place ribbons are presented for each class in a competition, and a limited number of Honorable Mention ribbons are awarded for images that have high scores. Ties are broken; that is, if two images received the top score, the judge is asked to select one as first place and the other as second place.

Classes

So that the competition is not dominated by the club's most experienced photographers, members are placed in one of three classes, AA, A, and B. In this way, members are competing with members with similar skill levels. Generally, new members start in class B and advance to A and then to AA based on success in their current class. However, under special circumstances, a member who thinks he/she is qualified for a higher class, may petition to be placed in higher skill class by contacting the Digital Chairperson PSRI-laptop@psri.us

Petitioning to go into another class must be done prior to the first competition of the year. After the first competition has been judged, everyone will remain in the same class their work was originally judged in. There will be No Exceptions to this rule for the competition year.

What can I enter?

OPEN Category. Members may enter two digital images for each OPEN competition night. Any subject and any image manipulation are allowed as long as the original image capture and the manipulation is your work. In addition, if you miss a competition night, in the very next competition, you may submit two makeups. Only one set of makeups are allowed during the course of a competition year.

NATURE Category. Nature competitions are different in that four digital images may be entered in each competition and image editing is limited to the requirements of the Photographic Society of America (PSA). The [PSA Guide for Nature Judges](#) provides considerable information on what types of images are allowed and which post capture adjustments are and are not allowed.

During the judging of NATURE images, if an image does not comply with the definition of a nature image as specified in the PSA Guide for Nature Judges, it may be disqualified by a judge and assigned a very low score. The judge's decision and score can be appealed and will be reviewed by three club members assigned by the President.

Image File Requirements

Use the sRGB color space. All digital entries should be in JPEG format and may not exceed 1400 pixels horizontally or 1050 pixels vertically. Due to projection parameters, images cannot exceed 1400 pixels in landscape orientation, or 1050 pixels in portrait orientation. (1400 x 1050 is read width x height).

Further, the file size should not exceed 800 Kb.

Entering the Competition and Uploading Image Files

All competition images are uploaded using the links in the Digital Entry Form 2020-2021 on the PSRI website, found under the Competition tab. You must be logged in to the website; the forms may be accessed by current members only.



The Digital Entry Form 2020-2021 has a list of competitions and closing dates. Each link opens a page with image upload forms. Click on the competition for which you are uploading images.



The screenshot shows a web page with a dark header containing a home icon and the text "Home > PSRI Projected Image Competition Season 2020-2021". The main content area has a light background with a vertical line on the left. The title "PSRI Projected Image Competition Season 2020-2021" is in large, bold, black font. Below the title, there is a welcome message, a paragraph of rules, a link to complete rules, and a note about class assignments. At the bottom, there are three links for different competitions with their respective due dates.

Home > PSRI Projected Image Competition Season 2020-2021

PSRI Projected Image Competition Season 2020-2021

Welcome to the new image entry system.

To compete in the PSRI Projected Image Competition your membership must be current. In each competition, you may enter a maximum of two images, If you miss a competition, you may enter two make-up images at the next competition, but may do this only once during the season. Complete competition rules are found [here](#). You can download a PDF of the digital projection competition rules [here](#).

If you are unsure of the Class you are assigned, please review the [Class assignments](#) from last year.

[Open Competition #1](#) Entry due date 13 October 2020

[Open Competition #2](#) Entry due date 1 December 2020

[Nature Competition #1](#) Entry due date 15 December 2020

For Competition #1 the page has two image entry forms. Open Competitions #2 -#5 will have two forms for that competition and forms for two make up images if you missed the previous competition. Nature competitions consist of four image entry forms; there are no forms for make up entries.

Photographic Society of RI Customize 2 0 + New Edit Page

Open Competition #1

Enter each image and save. You may return to this page and change any images until the closing date 13 October 2020. You will not be able to change your entry after this date.

You must enter the Class in which you compete. If you are new to PSRI competition you can download a copy of the Rules for Digital Competition [here](#). There is a section in the rules discusses competition Class.

Open Competition #1a

*CLASS	*TITLE	IMAGE FILE
Must Select One ▾		Browse... No file selected.

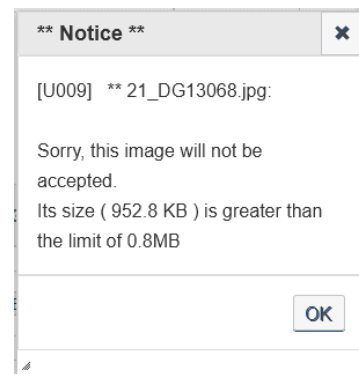
SUBMIT

Open Competition #1b

*CLASS	*TITLE	IMAGE FILE
Must Select One ▾		Browse... No file selected.


SUBMIT

You must include information in all three boxes of the form. Select your competition Class from the pull down menu, use the Browse button to select your image file, and enter the title of your image. If the file size or image dimensions are larger than the maximum specified and error pop-up will appear and prohibit upload of that image.



Once the image is accepted you will see the image thumbnail and other image file information. Press SUBMIT. If you did not fill in the class or title boxes an error pop-up window will let you know and will not upload the image. When uploading, a progress appears.


Open Competition #1a

*CLASS	*TITLE	IMAGE FILE	
<input type="text" value="Class AA"/>	<input type="text" value="Alaska Glacier"/>	<div style="border: 1px solid #ccc; padding: 5px;"> <input type="button" value="Browse..."/> Alasla gl...1156.jpg Name: Alasla glacier_DG21156.jpg Size: 270.0 KB Type: image/jpeg Colour Space: sRGB Width: 1400 Height: 941  </div>	<input type="button" value="CLEAR"/>

After the image has successfully uploaded, the information in the form will change to show the class, title, image thumbnail and file name.

Open Competition #1a

Currently stored on the server for Competition Dennis Goulet:

CLASS	TITLE	IMAGE FILE
Class AA	Alaska Glacier	 AA-1-Alasla_glacier_DG21156_.jpg

You will notice that the filename of your image has been prefixed with the competition class you entered and the image number 1 or 2. The number ensures that your two images will not be judged in close proximity to each other.

You will not receive a confirmation email as with the previous image entry system. The fact that you see a thumbnail of your image and the new filename indicate the image has been accepted.

If you missed a competition, in the very next competition, you may submit two makeups, which will be entered into the fields indicated for Makeups. There are no makeups in nature competition

- a) b. Only one set of makeups are allowed during the course of a competition year.
- b) c. Choose your image placements wisely. Your very best images should be used for “regular” projection. Makeups are NOT eligible for ribbons, but the scores they receive count towards your overall score for the competition year.

Suggestion: Create a folder on your hard drive for competitions, and include image files that meet the maximum dimensions and file size requirements. This will facilitate easily accessing the correct images that you are going to upload each time. If you only have competition images in that folder, the two images, (plus any makeups) to be uploaded, it will be quick, simple and less confusing to find the correct images to upload.

How to resize your image

Given the variety of image editing software in use by club members, the best means to find out how to resize your image is to Google for the instructions specific to the software you use.

Google: *How do I resize a photo image in “your software”*